

## Silver Boats

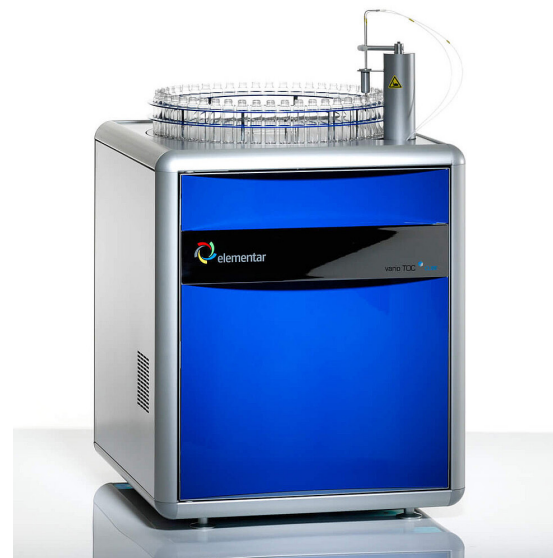
Elementar#	Alpha#	Description	UOM
200008833/ 11.02-1046	AED5127	Silver Weighing Boat (6 x 4 x 4mm)	500
200013336/ 11.00-1371	AED5024	Silver Weighing Boats (12 x 4 x 4mm)	100
200013336/ 11.00-1371	AR01371	Silver Sample Boats (12 x 4 x 4mm)	500
200007754/ 22 133 212	AR33212	Silver Sample Boats (12 x 6 x 6mm)	100
200013395/ 22 133 213	AR33213	Silver Sample Boats (15 x 8 x 8mm)	70
200010913/ 22 133 214	AR33214	Silver Sample Boats (20 x 10 x 9mm)	42

## Tin Boats

Elementar#	Alpha#	Description	UOM
200014577/ 22 137 418	AR37418	Tin Boat (12 x 4 x 4mm)	1000
200007074/ 22 137 419	AR37419	Tin Boat (12 x 6 x 6mm)	500
200012350/ 22 137 420	AR37420	Tin Boat (15 x 8 x 8mm)	250
200006296/ 12.00-1009	AR01009	Tin Boat (20 x 10 x 9mm)	120
200007257/ 11.00-5057	AED5140	Tin Boat Heavy Weight (12 x 4 x 4mm)	1000
200007543/ 11.02-1047	AED5029	Tin Weighing Boat (6 x 4 x 4mm)	1000

## Tin Cones, Squares, and Discs

Elementar#	Alpha#	Description	UOM
200009010/ 05 000 429	AR2186	Tin Foil Cups (36 x 36mm)	100
200009795/ 05 002 797	AR2186- 1000	Tin Foil Cups (36 x 36mm)	1000
200005722/ 12.01-0032	AR10032	Tin Foil Squares (36 x 36mm)	400
200011221/ 12.01-0033	AR12014	Tin Foil Squares (50 x 50mm)	500



**Silver Sample Boats  
(12 x 6 x 6mm)**  
AR33212  
(200007754/22 133 212)



**Silver Sample Boats  
(20 x 10 x 9mm)**  
AR33214  
(200010913/22 133 214)



**Tin Boat (12 x 4 x 4mm)**  
AR37418  
(200014577/22 137 418)



**Tin Boat (20 x 10 x 9mm)**  
AR01009  
(200006296/12.00-1009)



**Tin Foil Cups  
(36 x 36mm)**  
AR2186  
(200009010/05 000 429)



**Tin Foil Squares  
(36 x 36mm)**  
AR10032  
(200005722/12.01-0032)

## Tin Capsules for Liquids

Elementar#	Alpha#	Description	UOM
200008184/ 05 000 481	AR0481	Pressed Tin Capsule (11.5 x 4.75mm)	250
200013285/ 05 000 312	AED4120	Smooth Wall Tin Capsules (14 x 6.75mm)	100
200013224/ 05 001 727	AED4033	Smooth Wall Tin Capsules, Flat Base (5.5 x 3.5mm)	100
200014058/ 03 951 620	AED4131	Smooth Wall Tin Capsule, Flat Base (6 x 3mm)	250
200015479/ 03 951 619	AED4132	Smooth Wall Tin Capsule, Flat Base (9 x 3.5mm)	250
200011997/ 05 000 311	AR2166	Smooth Wall Tin Capsule (18 x 6mm)	100



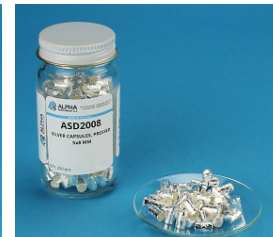
**Pressed Tin Capsule  
(11.5 x 4.75mm)**  
AR0481  
(200008184/05 000 481)



**Smooth Wall Tin Capsule,  
Flat Base (9 x 3.5mm)**  
AED4132  
(200015479/03 951 619)



**Smooth Wall Tin Capsule  
(18 x 6mm)**  
AR2166  
(200011997/05 000 311)



**Pressed Silver Capsule  
(8 x 5mm)**  
ASD2008  
(200014521/05 001 540)

## Silver Capsules for Liquids

Elementar#	Alpha#	Description	UOM
200007516/ 05 000 816	AR00816	Smooth Wall Silver Capsule (5.5 x 3.5mm)	250
200013710/ 05 001 732	AED4103	Smooth Wall Silver Capsules (5 x 2mm)	250
	AED4106	Smooth Wall Silver Capsules (5 x 2mm)	50

## Silver Capsules for Solids

Elementar#	Alpha#	Description	UOM
200014521/ 05 001 540	ASD2008	Pressed Silver Capsule (8 x 5mm)	250

## Quartz, Glassware and Furnace Tubes

Elementar#	Alpha#	Description	UOM
200014796/ 38.00-1290	AEC3054	Ash Crucible, Quartz	1
200014555/ 11.00-1170/4	AR1170/4	Ash Finger for Elementar	1
200014555/ 11.00-1170/4	AEC3060	Ash Finger for Elementar	10
200007844/ 11.00-1150/4	AR11504	Combustion/Reduction Tube	1
11.00-0080	AEC1143	Drying Tube (300mm) (Tube only, no caps)	1
200013470/ 50 009 375/4	AEC3045	Filter Tube	1
11.00-1317/4	AR1317/4	Protection Tube Vario (105mm) (with slits)	1
11.00-1317/4	AEC3059	Protection Tube Vario (105mm) (without slits)	1



**Ash Crucible, Quartz**  
AEC3054  
(200014796/38.00-1290)



**Ash Finger for Elementar**  
AR1170/4  
(200014555/11.00-1170/4)



**Combustion/  
Reduction Tube**  
AR11504  
(200007844/11.00-1150/4)



**Drying Tube 300mm  
(Tube only, no caps)**  
AEC1143 (11.00-0080)



**Filter Tube**  
AEC3045  
(200013470/50 009 375/4)

## Chemical Reagents

Elementar#	Alpha#	Description	UOM
200004773/ 05 000 086	AR00086	Alumina Wool, Fine	20g
200008689/ 05 002 799	AEB1354	Aquatak (drying agent) without indicator	50g
200010160/ 38.00-0124	AEB1304	Brass Wool	50g
200013646/ 05 000 469	AR00469	Cerium Dioxide Fused Granular	100g
200007554/ 03 679 905	AR01029	Copper Oxide Wire	250g
200009554/ 05 001 039	AR01039	Copper Oxide Wires, Fine (4 x 0.5mm)	250g
200006776/ 05 001 059	AEB1141	Mangesium Perchlorate Self Indicating Granular (0.7 - 1.2mm)	100g
200007811/ 03 002 262	AEB1196	Platinum Catlyst 5% Pt	30g
	AEB1255	Quartz Wool Discs 24mm Diameter	25
200007521/ 05 000 900	AR00900	Quartz Chips (Turnings) (2-5mm)	50g
200004827/ 03 679 908	AR177	Quartz Wool, Fine (9 Micron)	50g
200005872/ 22 131 365	AR22365	Silver Wool, Fine Wire (.05mm)	50g
	AEB1602	Sodium Carbonate	25g

## Operational Accessories

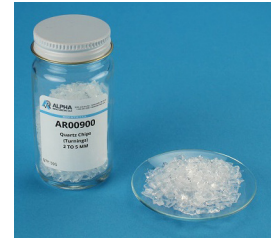
Elementar#	Alpha#	Description	UOM
200015256/ 03 002 399	AEE1174	Filter (18mm)	1
200015256/ 03 002 399	AEE1174-10	Filter (18mm)	10
200012903/ 05 000 044	AEE2518	GL18 Screw Cap	1
200006785/ 05 000 094	AEE2505	Gloves, Temperature Resistant	Pair
200014191/ 05 001 302	AEE1087	O-ring, Black, (7.59 x 2.62mm)	1
200009657/ 11.00-0500/4	AEE2521	Manually Operated Drill for Cleaning Tubes	1
200011004/ 15.00-0005	AEE2532	Set of Ball Valve Half Shells (10mm)	1
200006998/ 03 968 006	AR241	Silicone Grease	1



**Copper Oxide Wire**  
AR01029  
(200007554/03 679 905)



**Copper Oxide Wires,  
Fine (4 x 0.5mm)**  
AR01039  
(200009554/05 001 039)



**Quartz Chips  
(Turnings) (2-5mm)**  
AR00900  
(200007521/05 000 900)



**Quartz Wool, Fine  
(9 Micron)**  
AR177  
(200004827/03 679 908)

## O-ring

Elementar#	Alpha	Description	UOM
200013028/05 000 096	AR00096	O-ring (18 x 2mm)	1
200007224/03 654 627	AR54627	O-ring (20 x 2mm)	1
200007224/03 654 627	AR54627- 10	O-ring (20 x 2mm)	10
200007469/03 002 267	AR02267	O-ring (24 x 2mm)	1
200007469/03 002 267	AR02267- 10	O-ring (24 x 2mm)	10
200008314/05 000 249	AR00249	O-ring (4.5 x 1.5mm)	1
200008314/05 000 249	AR00249- 10	O-ring (4.5 x 1.5mm)	10
200006004/05 000 416	AR00416	O-ring (7.5 x 2.5mm)	1
200006004/05 000 416	AR00416- 10	O-ring (7.5 x 2.5mm)	10
200005999/05 000 353	AR50353	Quadring (7.65 x 1.78mm)	1
200005999/05 000 353	AR50353- 10	Quadring (7.65 x 1.78mm)	10